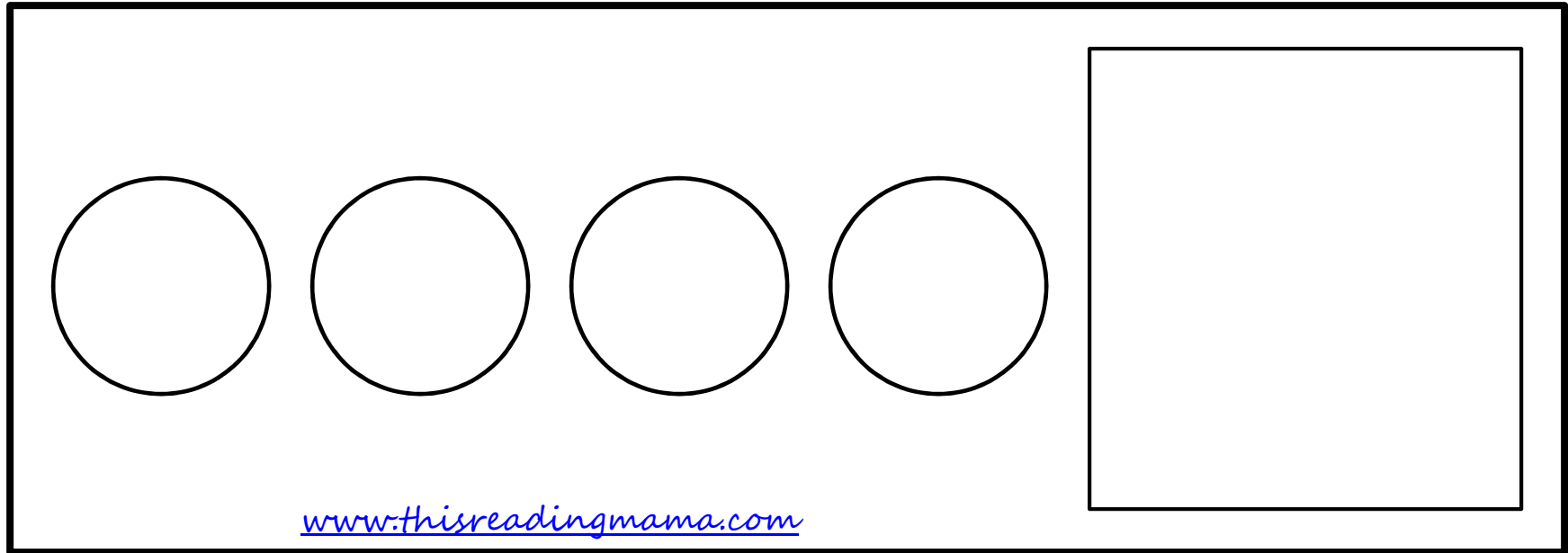


CVCe Bottle Cap Spelling



Bottle Cap Spelling Mat

Directions:

- *Gather bottle caps from water bottles or plastic soda bottles, write letters on the tops, and use them to spell CVCe words.
- *Print the Bottle Cap Spelling mat (1 for each student) & CVCe pictures onto cardstock and laminate for durability.

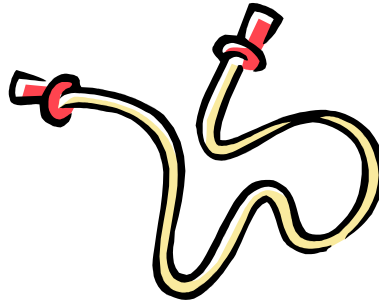
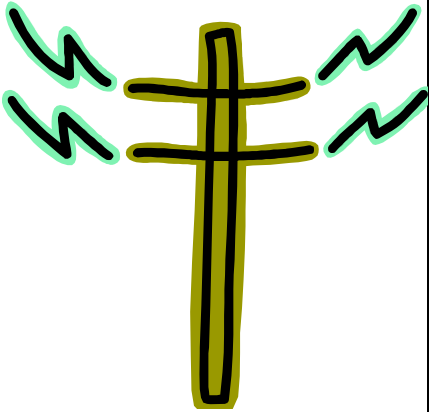
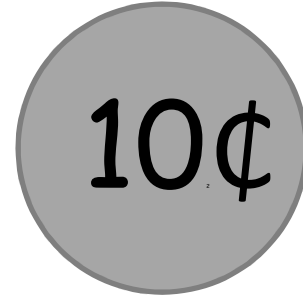
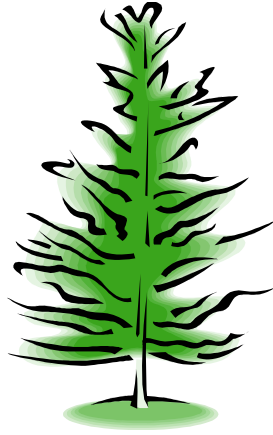
To make this activity self-checking, write the word on the back of each laminated picture.

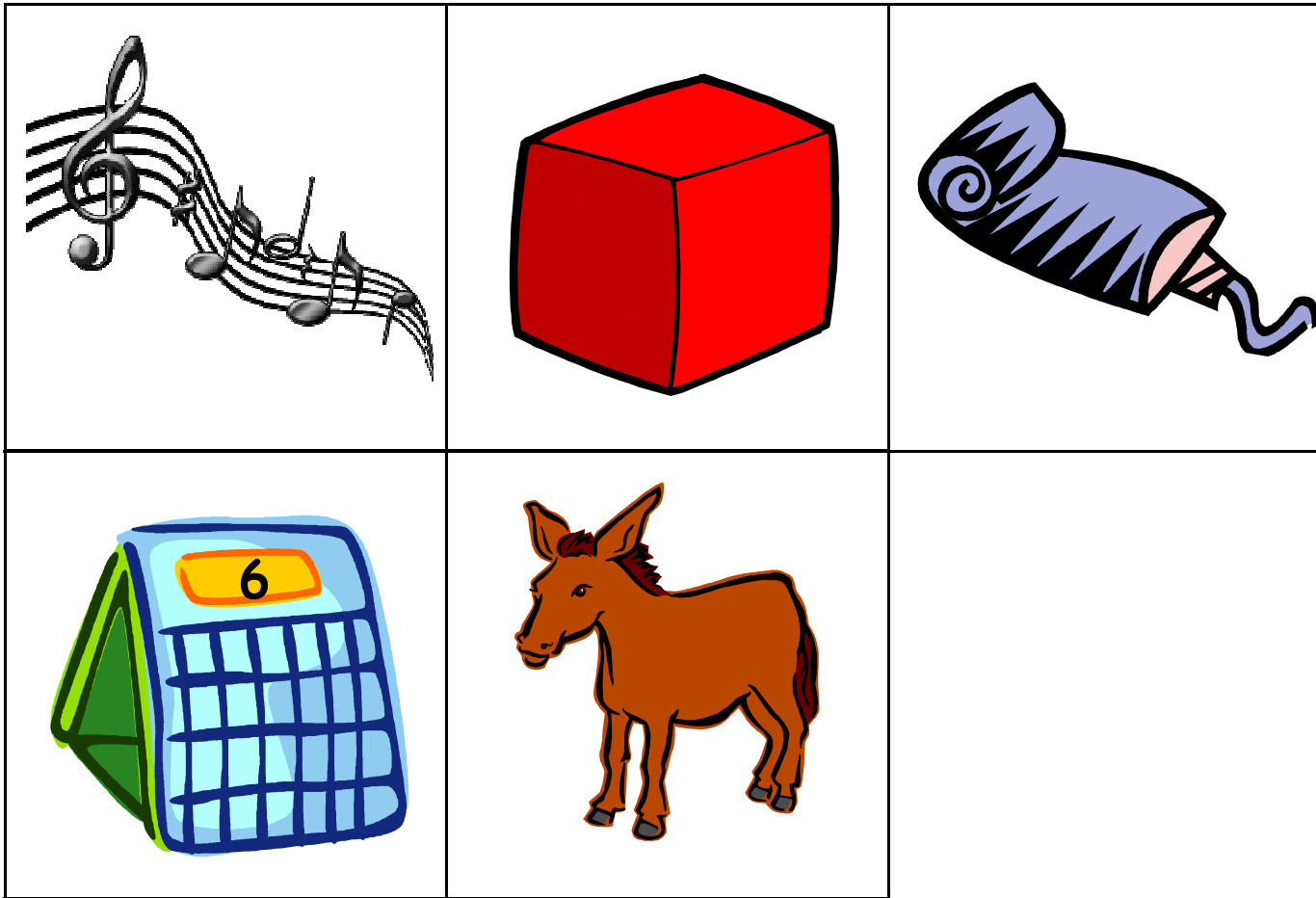
A picture key is provided on the last page of download.

www.thisreadingmama.com



5





Picture Key

Long a Words: cape, gate, cake, vase, tape, & cane
Long i words: time, bike, kite, five, pine, & dime
Long o words: pole, rope, note, hose, cone, & hole
Long u words: tune, cube, tube, June, & mule